

Use attachment

In QField, a field with *Attachment* widget can be used to:

- show and take photos
- show and record videos
- listen and record sound clips
- show links to external files like PDFs or documents



To configure the Widget, please refer to the [Attributes Form Documentation](#)

Add a series of pictures to a feature

Desktop preparation

One or more pictures can be added to the feature. Here is an example of how to proceed.

Tables

It is necessary to set up two tables. One table where the features are stored and one with a list

of pictures.

Apiary

Field	Type
id	Text (UUID)
geometry	Geometry
...	

Apiary_pictures

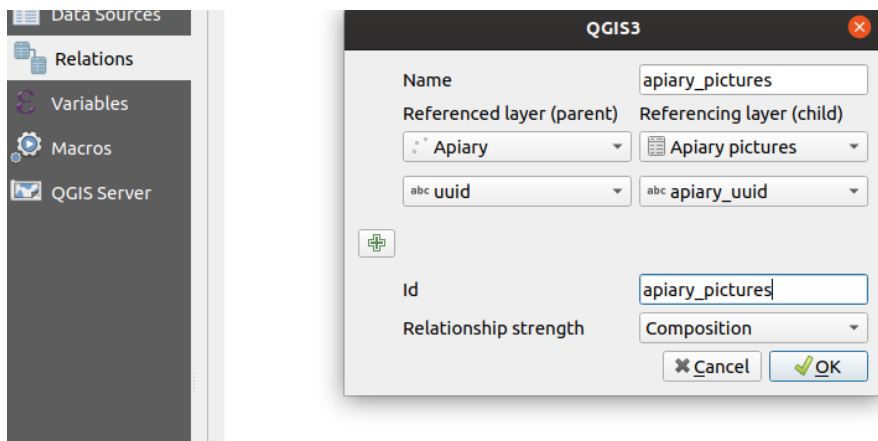
Field	Type
id	Text (UUID)
apiary_id	Text (UUID)
path	Text
...	

Relations

Create a relation with:

- apiary Referenced layer
- id Referenced field
- apiary_picture Referencing layer
- apiary_id Referencing field
- strength Composition

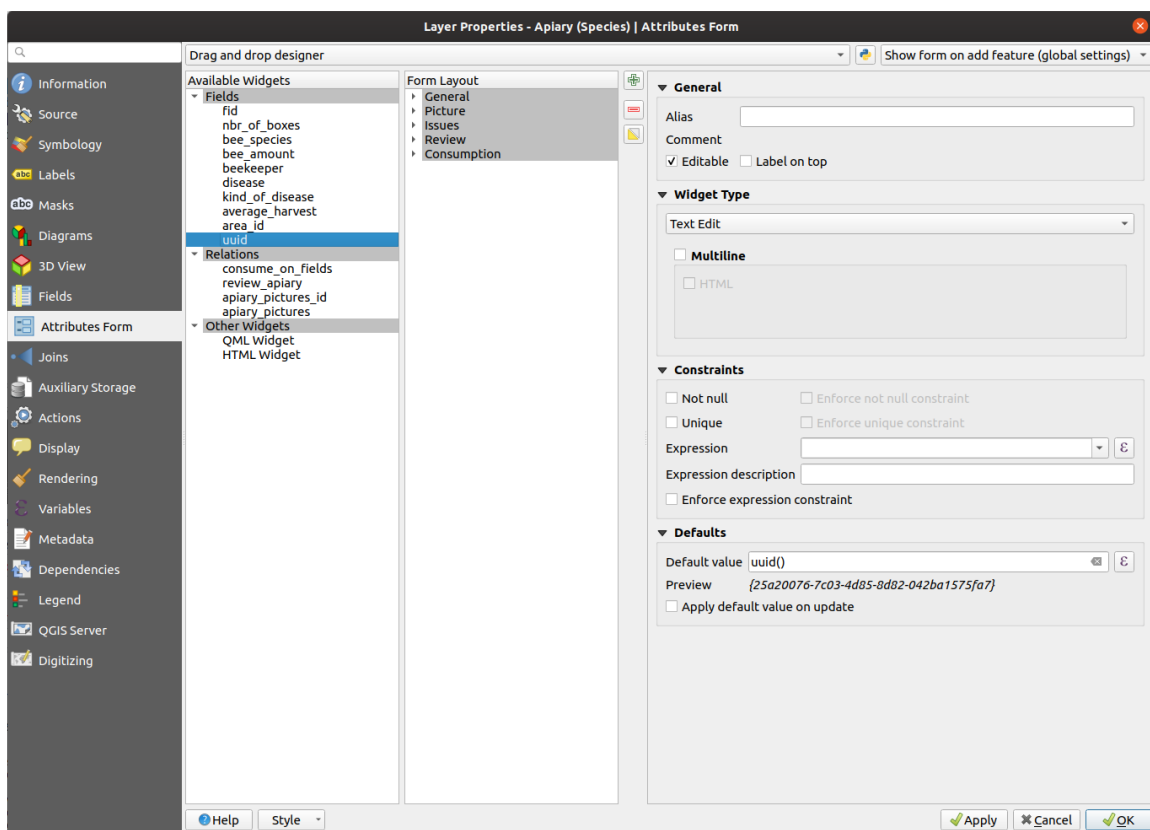
Project Properties Relations							
	Name	Referenced Layer	Referenced Field	Referencing Layer	Referencing Field	Id	Strength
1	apiary_area	Fields	fid	Apiary	area_id	apiary_279...	Association
2	consume_on_fields	Apiary	fid	Pollen ...	apiary_id	Pollen_Con...	Composition
3	consumed_by_apiary...	Fields	fid	Pollen ...	field_id	Pollen_Con...	Composition
4	review_apiary	Apiary	fid	Apiary ...	apiary_id	Reviews_c...	Composition



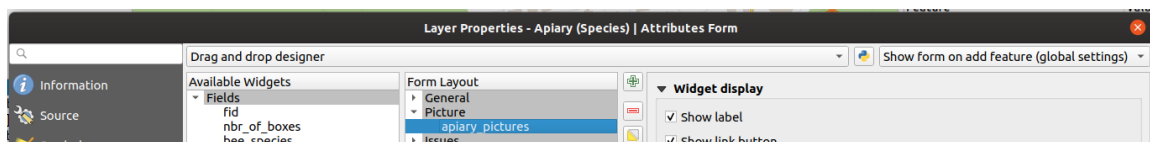
Widgets

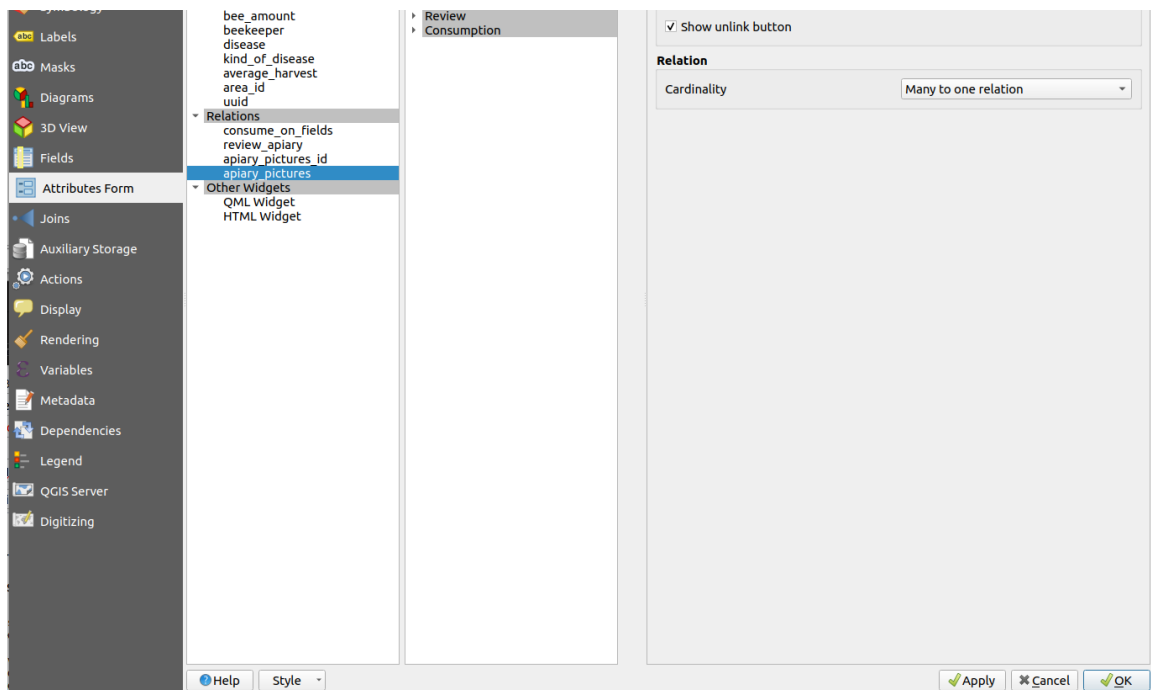
Apiary

Set the default value of the field id to `uuid()` or use the *UUID Generator* widget. No need to show it in the form.



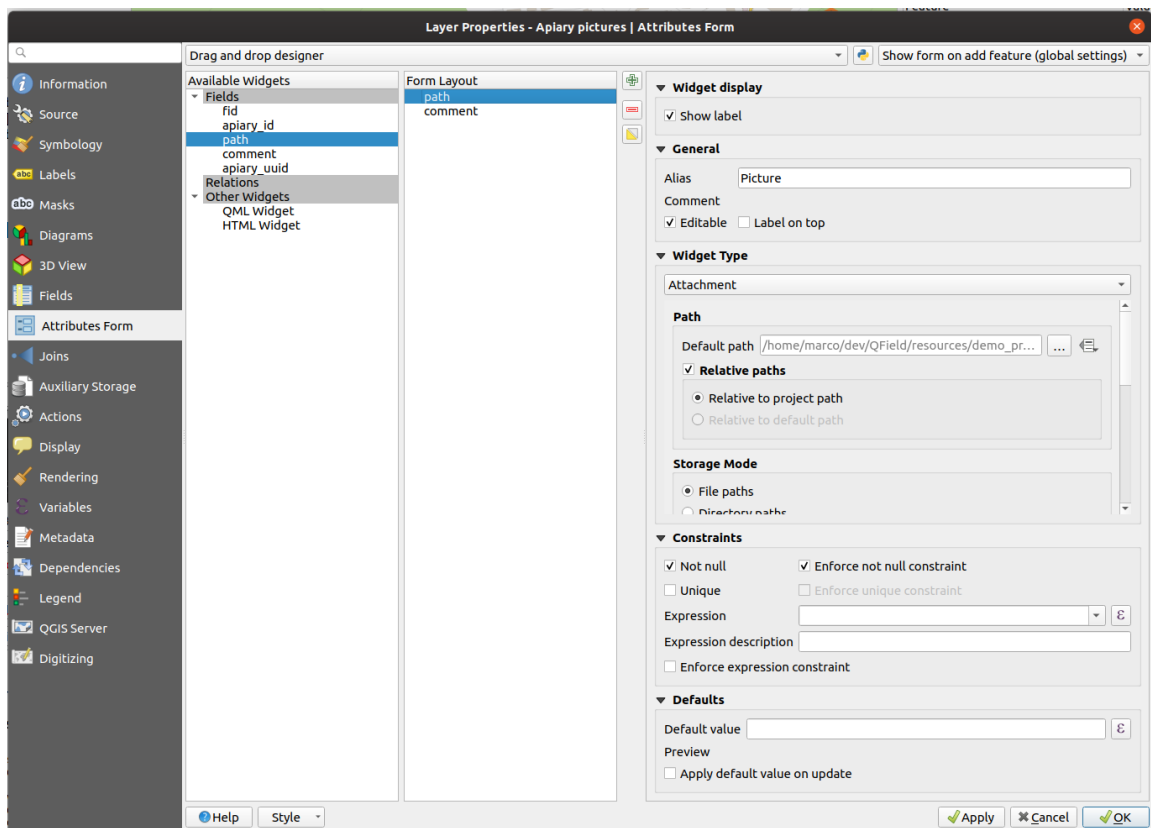
Set the relation widget to *many to one relation* and add the relation to the form





Apiary picture

Set the widget type of the field path to *Attachment* and add it to the form



Drawing and sketching

QField have an in-app drawing and sketching functionality enabling you to directly sketch over and annotate images captured while in the field as well as drawing on top of a blank canvas or over a template.

Geotagging

Fieldwork

QField's internal camera will automatically geotag your pictures.

Information about location and direction of the pictures will therefore be baked into the image file.



Note

While with older Android versions it was possible to use other apps like the amazing OpenCamera app for taking pictures and preserving EXIF information from there, this is no longer with recent Android versions. If you enable *Use native Camera* in the *settings* you will not be able to preserve EXIF information.

Fetching Geotags (EXIF) from the image file into the attribute table

Desktop preparation

Sometimes you might be interested in automatically storing Geotags such as the latitude, longitude, orientation, etc. This information is also known as EXIF tags.

To store the EXIF information, follow these steps:

1. Add an attribute per EXIF tag in the table that contains the pictures.
2. In the pictures form, configure the default value of each attribute to the corresponding *EXIF* expression [See QGIS EXIF function](#), and make sure *Apply on update* is activated.
3. The EXIF tags that QField can capture are listed in the QGIS documentation ([link above](#)).

However, this list might slightly varies depending on the mobile characteristics.

- Capturing EXIF tags requires accessing the full physical path of the picture. Be sure to reflect this in the QGIS expression. For example, the expression `exif(@project_folder + '/' + "path", 'Exif.Image.Orientation')` retrieves the orientation of the picture stored in *path*. For more tags visit the [QField EXIF reference documentation](#) and the [exiv library documentation](#).
- Completed! QField's now capture and store the EXIF tags in the pictures table while taking pictures.

Maximum picture size

Desktop preparation

The advanced settings allow rescaling the photos to a maximum width/height in *QFieldSync plugin > Project configuration*



Configurable attachment path

Desktop preparation

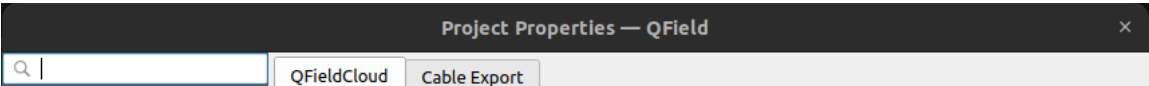
QFieldSync provides the possibility to configure the path of picture attachments.

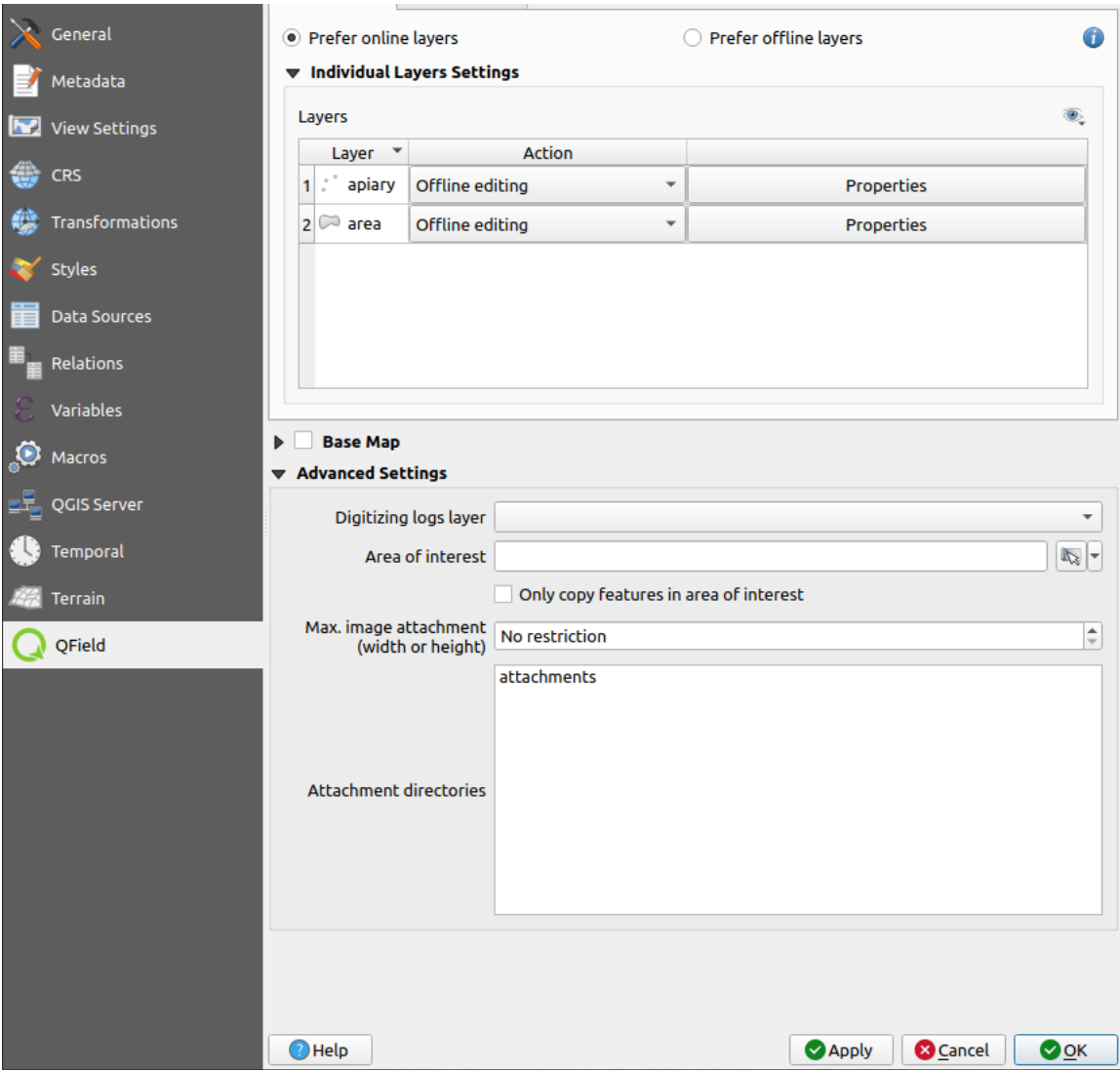
- Go to *QFieldSync plugin > Layers Properties*
- Choose the layer, the field and configure the expression

Use expressions to specify the path of the attachments. By default, pictures are saved into the "DCIM" folder, audio are saved into the "audio" folder and videos are saved into "video" with a timestamp as name.

Attachment naming	Field		Naming Expression	
	1	photo	'DCIM/animaux_' format_date(now(),'yyyyMMddhhmmsszzz') '{extension}'	

Additional directories can be synchronized with pictures or other attachments. Extra paths can be configured in *Attachment directories*. All paths are relative to the project directory.





Note

QGIS 3.14 or newer is required for this functionality